

NARRATIVE

CALLIE FAY NICHOLS

STILLS

PRODUCTION DESIGN

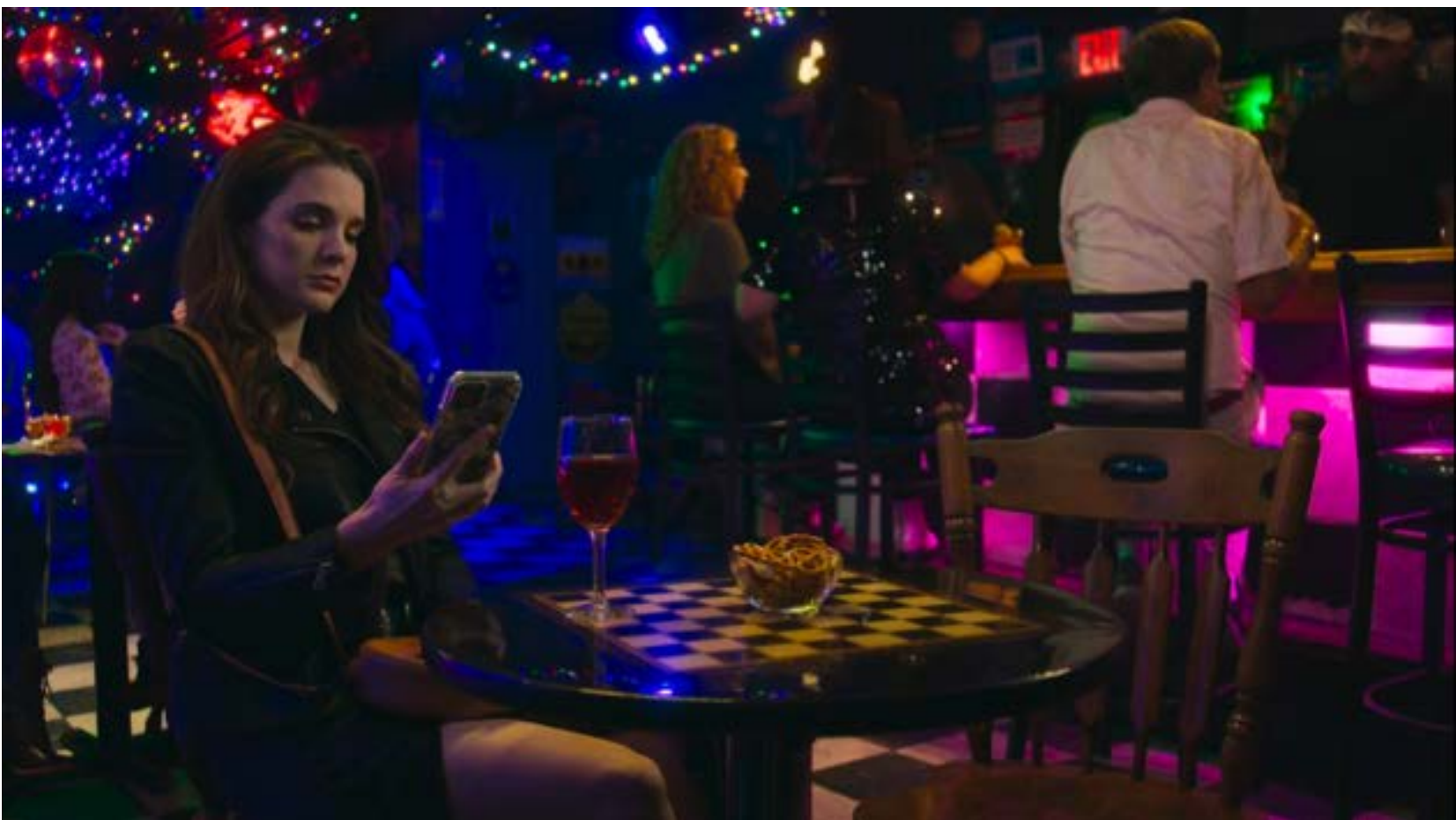


GREAT WHITE NDN











MONITOR GRAB DURING PRODUCTION OF CALCULATED OBSESSION - THIS FILM IS IN POST PRODUCTION



NEVER STOP DREAMING

MUSIC VIDEO

CALLIE FAY NICHOLS

STILLS

PRODUCTION DESIGN



MAD HONEY'S "BLUE AND YOU"





HINDER'S "REMEMBER ME"



LIFE.CHURCH'S "JESUS SONGS"



HINDER'S "REMEMBER ME"



IMAGINARIES "REVIVAL"



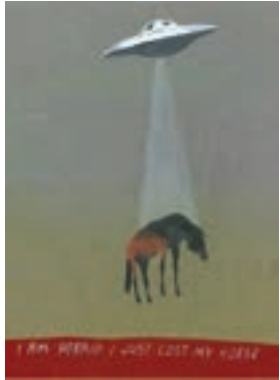
MICROBAR

OKLAHOMA CITY, OK

Located on the northwest corner of 10th and Broadway, this project lies in the heart of the Historic Automobile Alley District of Oklahoma City. The owner of this property, Nichols Energy Services, has been in operation for nearly 75 years. They have persevered through ups and downs and can contribute their survival to hard work and community. Now, Nichols Energy will enter into an industrial revolution of their own by embracing new ideas, businesses, and technologies.

A redesign of their 8,600 square foot building will add an additional 14,500 square feet. This will create spaces for the community and other local businesses to enjoy this property. This Microbar is just one of those new concepts.

CONCEPT



This design will create new memories while paying homage to the past. Natural textures will mix with vibrant colors and lighting to reinvigorate the space by creating a new realm.

Line, rhythm, and shape will strive to echo the building's origin as an Oldsmobile dealership. Intentional spaces sprinkled with unique elements will welcome all to gather.

Keywords: Connection to the Industrial Age, Urban, Texture, Geological, Metallic, Elemental



CEILING



WALL TILE



SOLID SURFACE



SOLID SURFACE



WOOD TILE

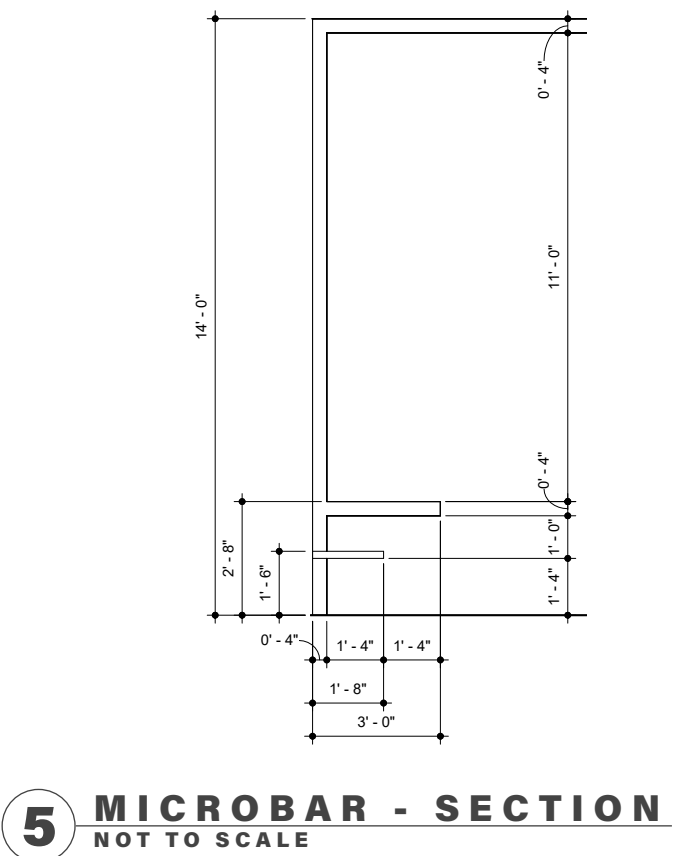
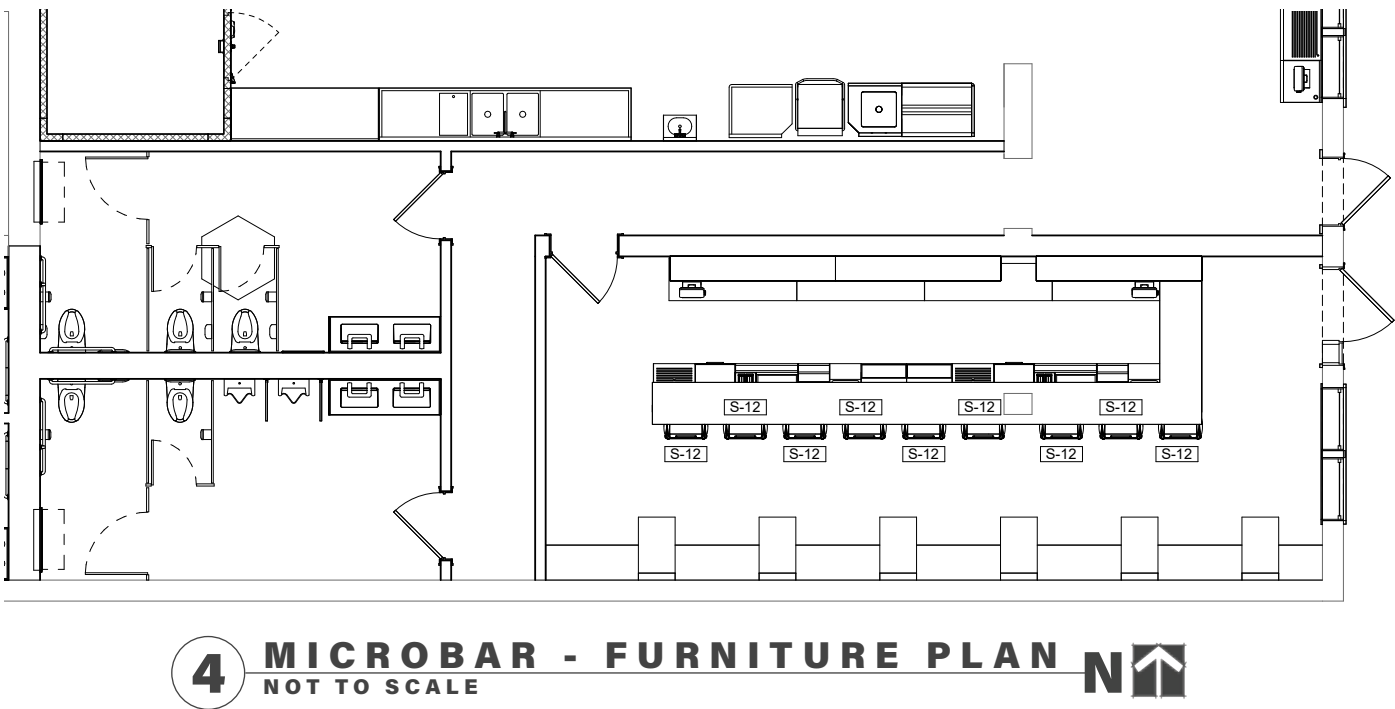
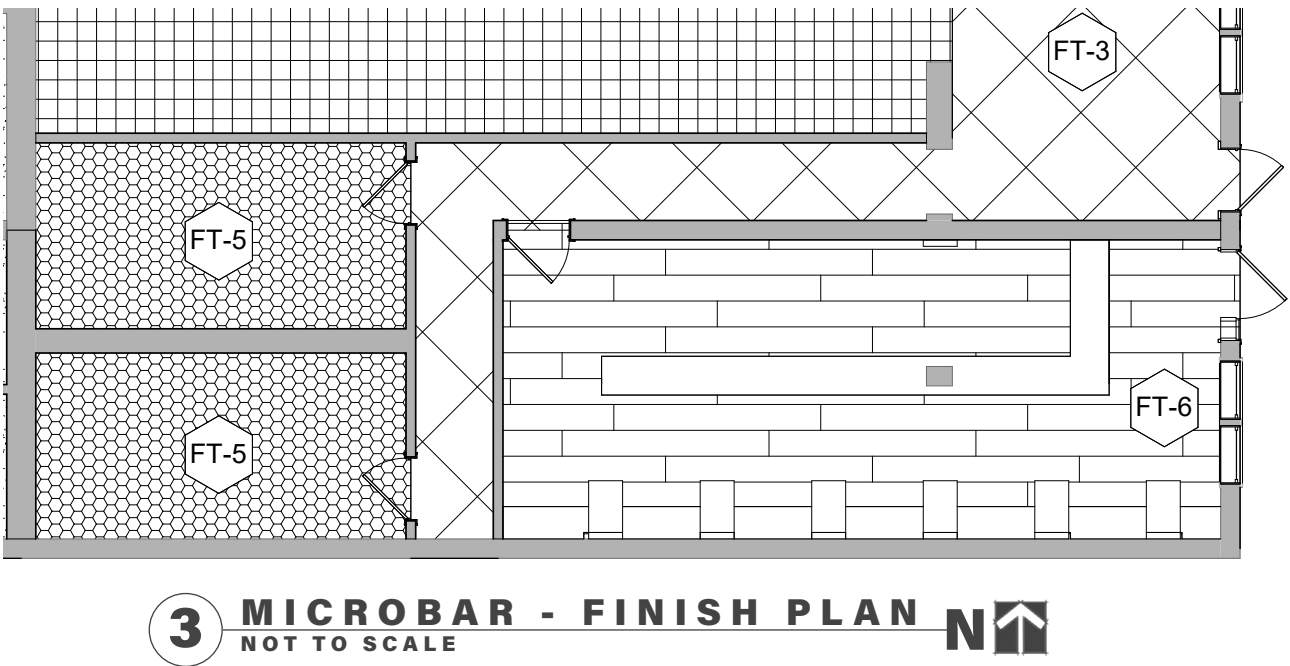
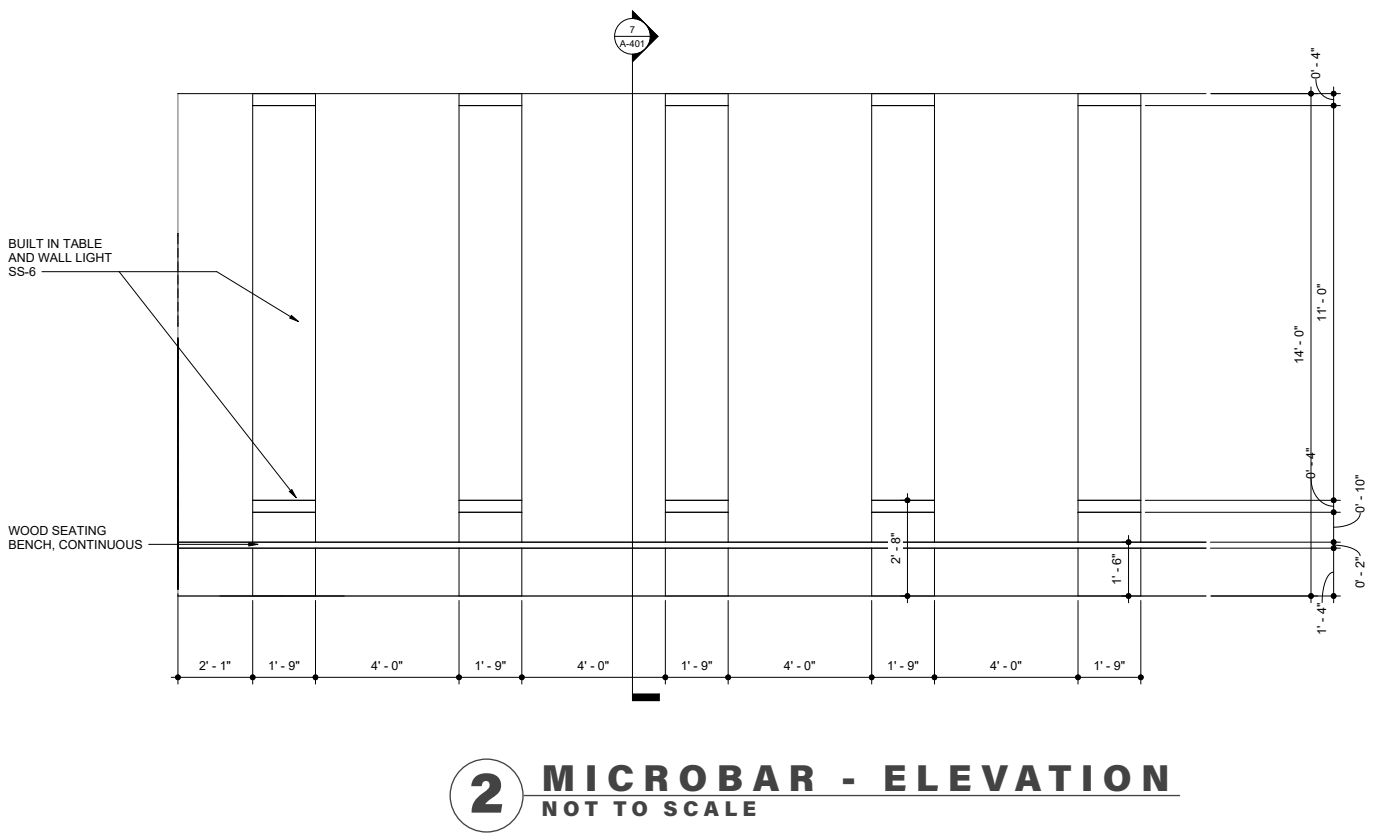
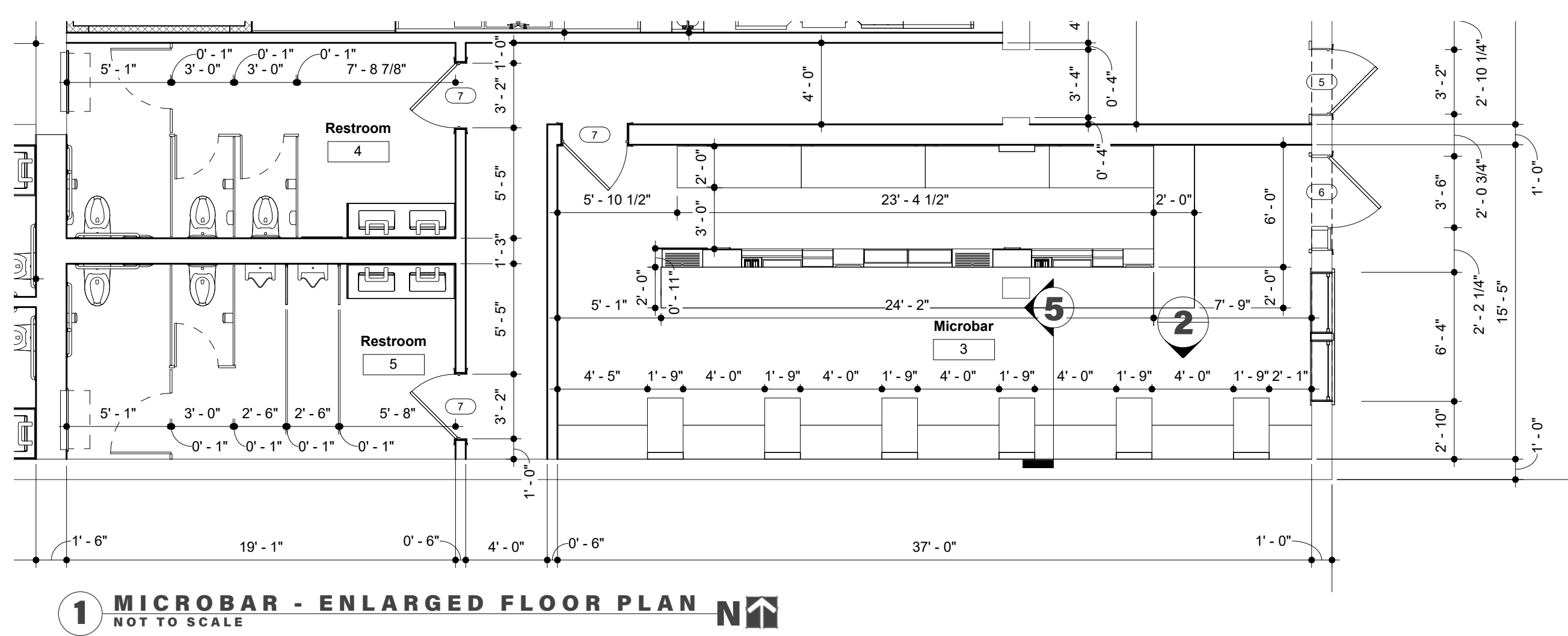
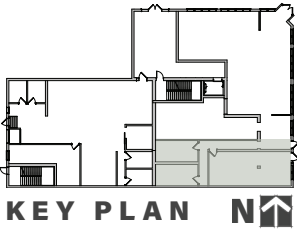


FLOOR TILE



MICROBAR CONSTRUCTION DRAWINGS

FOR FORMATTING PURPOSES WITHIN MY PORTFOLIO THESE ARE NOT TO SCALE. IF YOU WOULD LIKE TO SEE A SELECTION OF CD'S PLEASE REACH OUT.



NATIONAL AFRICAN AMERICAN JAZZ LEGACY MUSEUM

PERFORMANCE VENUE

The National African American Jazz Legacy Museum will be a valuable new destination for jazz and music lovers. The museum traces the evolution of jazz music brought from Africa in the belly of the slave ship into the various musical forms that we know and love today. The purpose of the National African American Museum is to preserve, promote, and present this jazz legacy by inspiring knowledge, appreciation, and the celebration of jazz. The space will encompass a jazz performance lab that can accommodate 200 with a small prefunction area.

CONCEPT



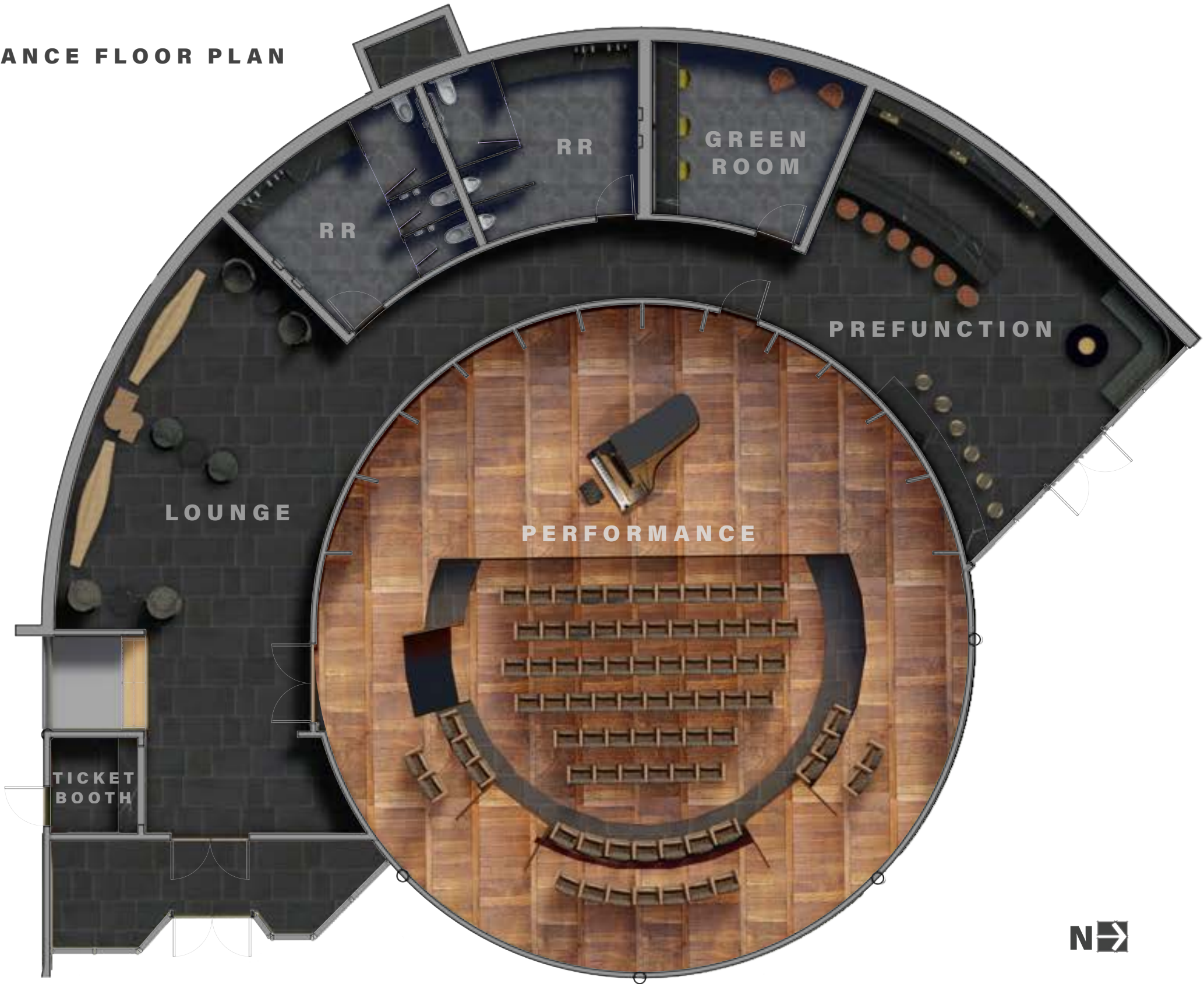
Keywords: Culture, Staccato, Bold

Inspired by local artist Jaiye Farrell, who cultivated his painting style from abstract patterns that transcend societal and cultural divides to remember the communal roots of humanity. From an infatuation with archeology emerged a creative and ambitious talent: to craft signature designs that inspire self-reflection.

“The pattern I am cultivating is a rhythm of line and shape. I use a substance that morphs so I can transform surfaces, objects, and spaces around me.”



PERFORMANCE FLOOR PLAN NOT TO SCALE





TICKET BOOTH PERSPECTIVE



PENDANT LIGHT



STOOL



PERFORMANCE PERSPECTIVE

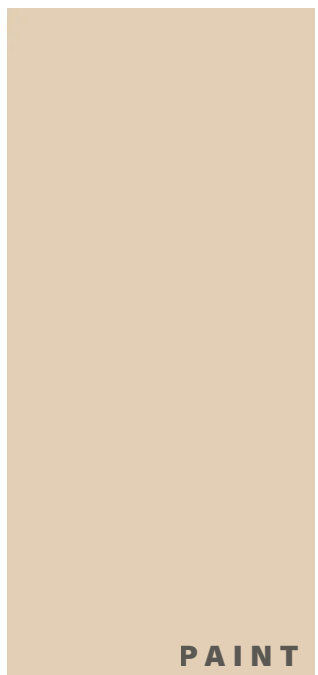
MATERIALS



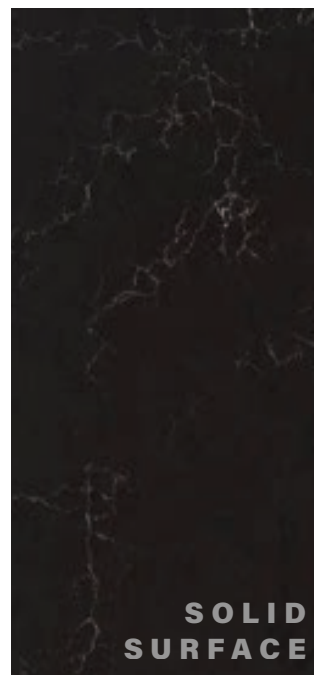
CEILING



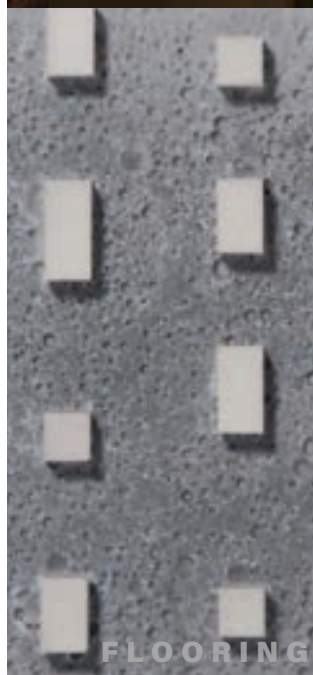
PAINT



PAINT



SOLID
SURFACE



FLOORING



CHANDELIER



FIXED SEATING

HOTEL AARU

CAIRO, EGYPT

This project will strive to create a space for the citizens of Cairo to escape the hustle and bustle of city life. Here the aim will be to weave together the cultures of ancient and modern-day Egypt, seeking community, connection, and comfort while engaging with creativity and nature.

Egypt has been in a tumultuous period, but now, in this era of rebirth, this hotel will aim to be a glimpse of Aaru within Cairo. Ancient concepts will collide with modern-day elements to create a captivating environment with carefully cultivated spaces. The color palette will be evocative of the ethereal journey to the mythical Aaru. Textures will be influenced by natural elements. Line, rhythm, and shape, take inspiration from the ancient culture. With the help of warm lighting and universal design, the space will be warm and welcoming. Local flora and fauna will be incorporated to create a relaxing oasis in this desert community.

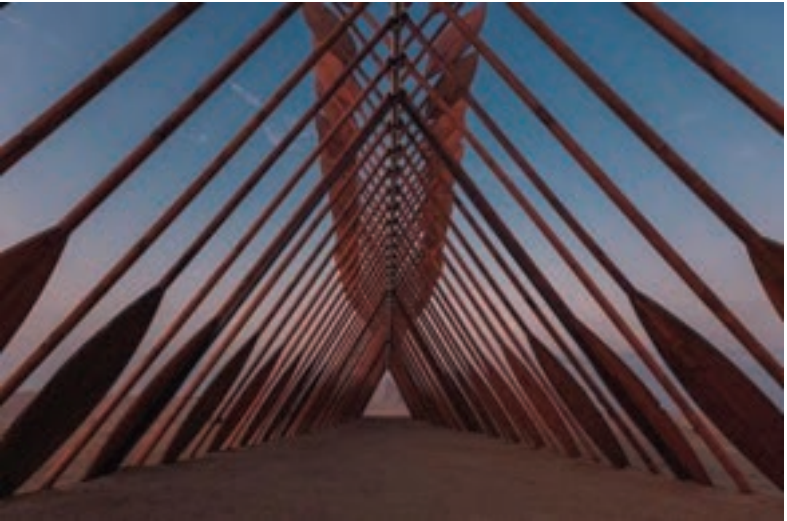
CONCEPT



Keywords: Breathe, innovation, Relax

The Ancient Egyptians believed that death was not the end but a transition to something better. Aaru was just that. You would arrive, after being ferried across Lily Lake, in the lush paradise of Aaru. Here you could reconnect with everything that was lost.

Ancient concepts will collide with modern-day elements to create a captivating environment with carefully cultivated spaces. The color palette will be evocative of the ethereal journey to the mythical Aaru.





First Floor Plan
NOT TO SCALE



Hotel Room Floor Plans
NOT TO SCALE



Loft Second Level



SIDE TABLE



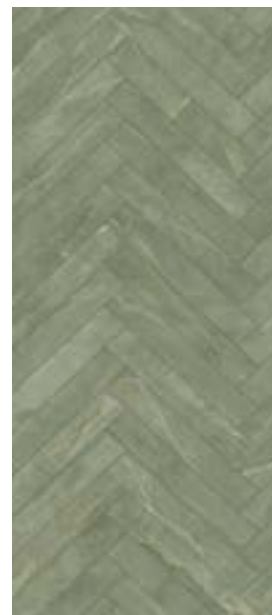
SUN LOUNGER



POOL TILE



WALLCOVERING



FLOORING



BARSTOOL



TABLE





PENDANT LIGHT



LOUNGE CHAIR



WALLCOVERING



HORIZONTAL SHOWER



SCONCE



HOTEL ROOM PERSPECTIVES



BED



RESTROOM PERSPECTIVE